



**Candice Bergh**  
0678761811  
imaginesales16@gmail.com

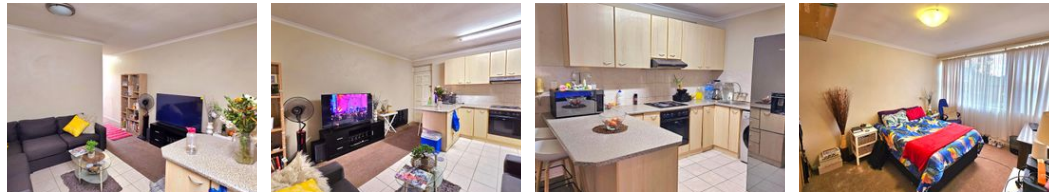
Contact Head Office (JHB, Pretoria, Cape Town and Garden Route)

+27 712982714

Unit 6 & 8 Rotherfield Trust  
23 Rotherfield Road  
Plumstead  
7800



Web Ref AB-282801



**R685,000**

 1  1

**Monthly Bond Repayment** R7,070.49  
Calculated over 20 years at 11% with no deposit.

**Transfer Costs** R23,730.00 **Bond Costs** R17,680.00  
These calculations are only a guide. Please ask your conveyancer for exact calculations.

**Monthly Levy** R1,524 **Monthly Rates** R125

Priced to sell!! Excellent investment!! - Sole Mandate

This 1-bedroom apartment, located in a well-managed complex, offers a fantastic opportunity for first-time buyers or investors. The spacious bedroom comes with built-in cupboards, while the open-plan kitchen and lounge create a comfortable living space.

Open balcony for those hot summer days. Bathroom with separate shower and bath.

Situated in a prime location, close to schools, shops, public transport, and other essential amenities, convenience is at your doorstep.

The building is safe and secure with 24-hour security, ensuring peace of mind. The apartment is in fair condition and could use some minor touch ups.

Priced to sell fast—don't miss out on this great deal!

Viewing by appointment only!!

### Features

Interior		Exterior		Sizes	
Bedrooms	1	Carports / Parkings	1	Floor Size	54m <sup>2</sup>
Bathrooms	1	Security	Yes		
Recep. Rooms	1	Pool	No		
Furnished	No				