



**Abubakr Achmat**  
0614557025  
imaginesales01@gmail.com



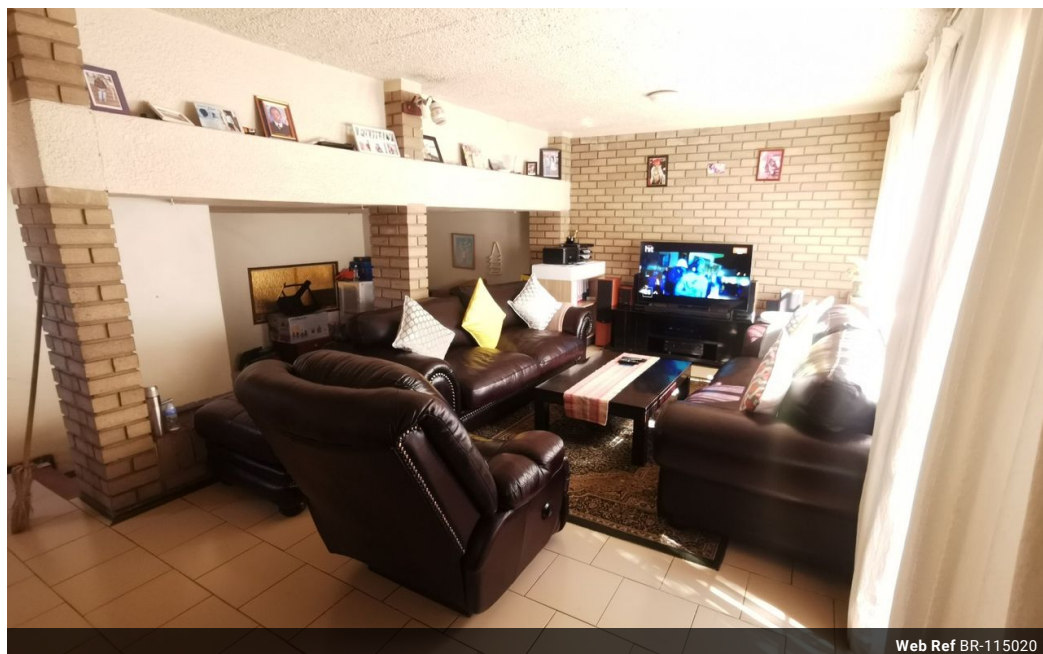
**Robin Lawrence**  
0814224787

imaginesales01@gmail.com

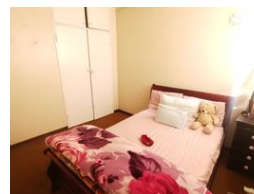
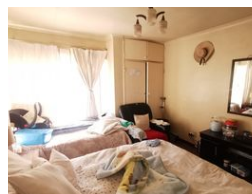
Contact Head Office (JHB,  
Pretoria, Cape Town and Garden  
Route)

+27 712982714

Unit 6 & 8 Rotherfield Trust  
23 Rotherfield Road  
Plumstead  
7800



Web Ref BR-115020



## R570,000

3 2

**Monthly Bond Repayment** R5,883.47  
Calculated over 20 years at 11% with no deposit.

**Transfer Costs** R21,217.00 **Bond Costs** R15,795.00

These calculations are only a guide. Please ask your conveyancer for exact calculations.

**Monthly Levy** R2,000 **Monthly Rates** R131

### 3 BEDROOM 2 BATHROOM LOFT IN SECLUDED AND WELL TAKEN CARE OF BUILDING!!!

Very spacious 134 sqm 3 bedroom flat with built-in cupboards, 2 bathrooms, lounge, fitted kitchen, dining room, yard and an open balcony. One bonus is that the flat comes with 2 parking bays.

The building is in good condition and consists of only 4 units and is strategically situated in Bellevue East off Dunbar Street close to the major routes including De La Rey and Buzuidenout streets.

The block is situated close to all amenities such as Observatory Girls Preparatory School, Hirsch Lyons Girls high School, RX Rocky Street Pharmacy, IKC Supermarket, Observatory Golf Course. The building benefits from secure parking and security gate.

Levy: R 2 000 per month.

Estimated Rental: R 6 500 – R 8 750 per month.

### Features

#### Interior

Bedrooms	3
Bathrooms	2
Recep. Rooms	2

#### Exterior

Carparks / Parkings	2
Security	Yes
Pool	No

#### Sizes

Floor Size	134m <sup>2</sup>
------------	-------------------