



Robin Lawrence
0814224787
imaginesales01@gmail.com



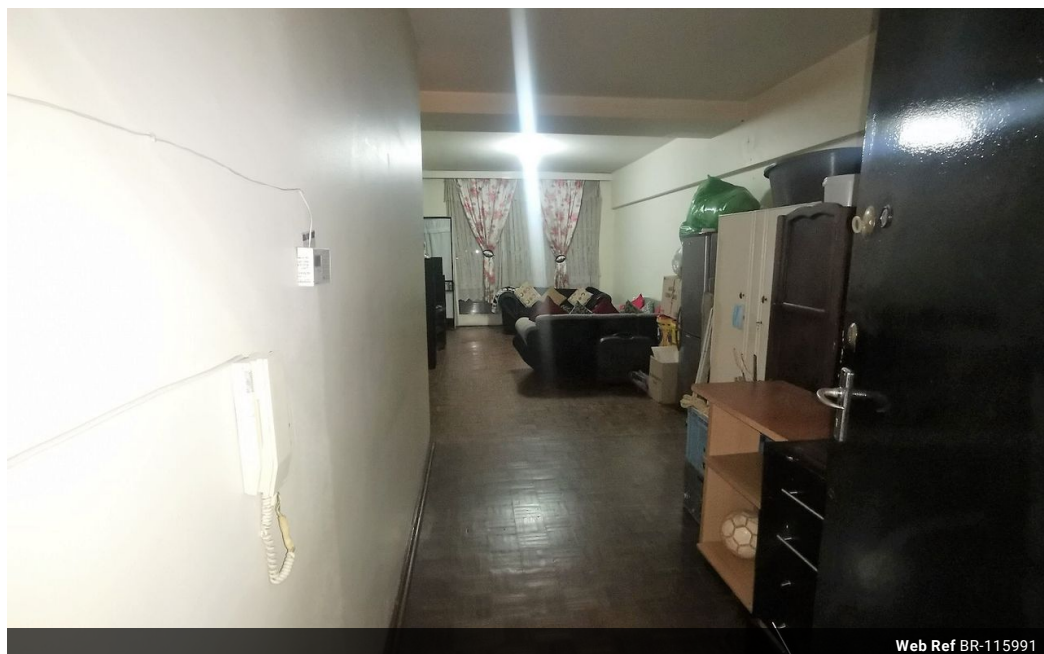
Abubakr Achmat
0614557025

imaginesales01@gmail.com

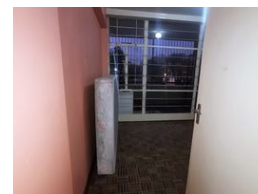
Contact Head Office (JHB, Pretoria, Cape Town and Garden Route)

+27 712982714


Unit 6 & 8 Rotherfield Trust
23 Rotherfield Road
Plumstead
7800



Web Ref BR-115991



R515,000

 3  2.5

Monthly Bond Repayment R5,315.77
Calculated over 20 years at 11% with no deposit.

Transfer Costs R21,217.00 **Bond Costs** R15,795.00
These calculations are only a guide. Please ask your conveyancer for exact calculations.

Monthly Levy R2,195 **Monthly Rates** R31

IDEAL FOR THE AVID INVESTOR OR FIRST TIME HOME OWNER!!!

Here we have a huge and well maintained 128sqm apartment that comes complete with 3 bedrooms, all with built in cupboards, a fitted kitchen, a large lounge and dining area, a bathroom with a bath and toilet, a separate toilet and also benefits from an open balcony. The unit is also situated on the 2nd floor making it easily accessible. It comes with a parking bay as well.

The building is well managed and maintained by Sectional Title Property Management and is situated on the corner of Lily Avenue and Doris Street in Berea. The building is also very popular with tenants as it is closely situated to all the major amenities and the main bus and taxi routes.

Levy - R2195.03
CSOS Levy - R33.90
Reserve Fund Levy - R330.17
Water - R381.26
Sewerage - R361.87

Estimated monthly rental income: R 7 500 - R 9 000

Features

Interior		Exterior		Sizes	
Bedrooms	3	Carports / Parkings	1	Floor Size	128m ²
Bathrooms	2.5	Security	Yes		
		Pool	No		