



**Robin Lawrence**  
0814224787  
imaginesales01@gmail.com



**Abubakr Achmat**  
0614557025

imaginesales01@gmail.com

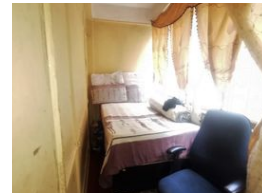
Contact Head Office (JHB, Pretoria, Cape Town and Garden Route)

+27 712982714

Unit 6 & 8 Rotherfield Trust  
23 Rotherfield Road  
Plumstead  
7800



Web Ref AW-44283



**R205,000**



**Monthly Bond Repayment** R2,115.99  
Calculated over 20 years at 11% with no deposit.

**Transfer Costs** R13,821.00    **Bond Costs** R9,510.00

These calculations are only a guide. Please ask your conveyancer for exact calculations.

**Monthly Levy** R1,882

**AN IDEAL PROPERTY FOR THE AVID INVESTOR!!**

Here we have a neat and spacious 81sqm apartment that comes complete with a large bedroom with built in cupboards, fitted kitchen, large living/dining area that has been partitioned to generate maximum rental income and a bathroom with separate toilet. The unit also benefits from an open balcony.

The building is situated on the corner of Tudhope Avenue and Prospect road. it is well managed and maintained by PAL Property managing agents. The building is very closely situated to all the major amenities and the main bus and taxi routes. This making it very popular with tenants as well.

Estimated monthly levy: R 1882

Estimated monthly rental income: R 4 500 - R 6 000

**Features**

Interior		Exterior		Sizes	
Bedrooms	1	Security	Yes	Floor Size	81m <sup>2</sup>
Bathrooms	1	Pool	No		