



**Robin Lawrence**  
0814224787  
imaginesales01@gmail.com



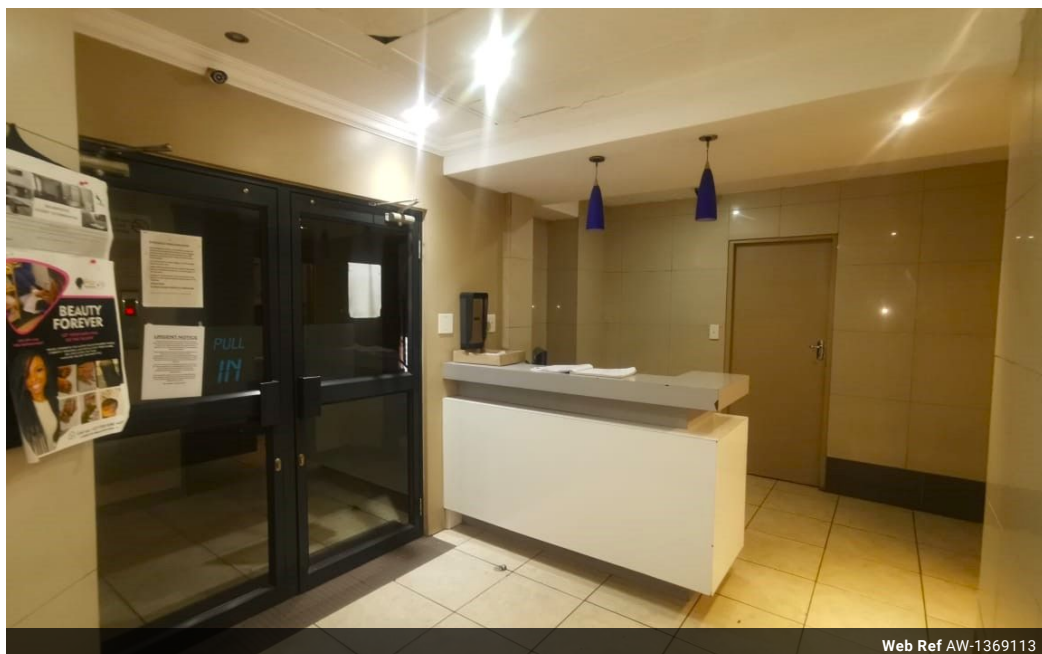
**Abubakr Achmat**  
0614557025

imaginesales01@gmail.com

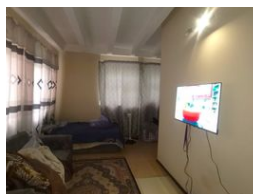
Contact Head Office (JHB, Pretoria, Cape Town and Garden Route)

+27 712982714

Unit 6 & 8 Rotherfield Trust  
23 Rotherfield Road  
Plumstead  
7800



Web Ref AW-1369113



**R335,000**

 0.5  1

**Monthly Bond Repayment** R3,457.83  
Calculated over 20 years at 11% with no deposit.

**Transfer Costs** R16,346.00    **Bond Costs** R11,560.00  
These calculations are only a guide. Please ask your conveyancer for exact calculations.

**Monthly Levy** R1,969

**PERFECT INVESTORS UNIT AVAILABLE!!**

This neat 24 sqm in size bachelor flat consists of built-in cupboards, a neatly fitted cozy kitchen space, shower and toilet in the bathroom. The apartment is on the 3rd floor of the building with lifts in excellent working condition.

The block is located on Juta Street corner of Simmonds Street, in Braamfontein next to the Johannesburg Theatre, JD Group, Sappi and Liberty. It is a stone throw away from the Gautrain and the Rea Vaya Station making it a very strategic location for students or young professionals.

This unit is the perfect buy for those that want to experience modern city-living without having to worry about costly renovations or the security risks usually associated with the Johannesburg CBD. There is high rental demand because of the block's location being close to Wits University and the University of...

**Features**

Interior		Exterior		Sizes	
Bedrooms	0.5	Security	Yes	Floor Size	24m <sup>2</sup>
Bathrooms	1	Pool	No		