



Abubakr Achmat
0614557025
imaginesales01@gmail.com



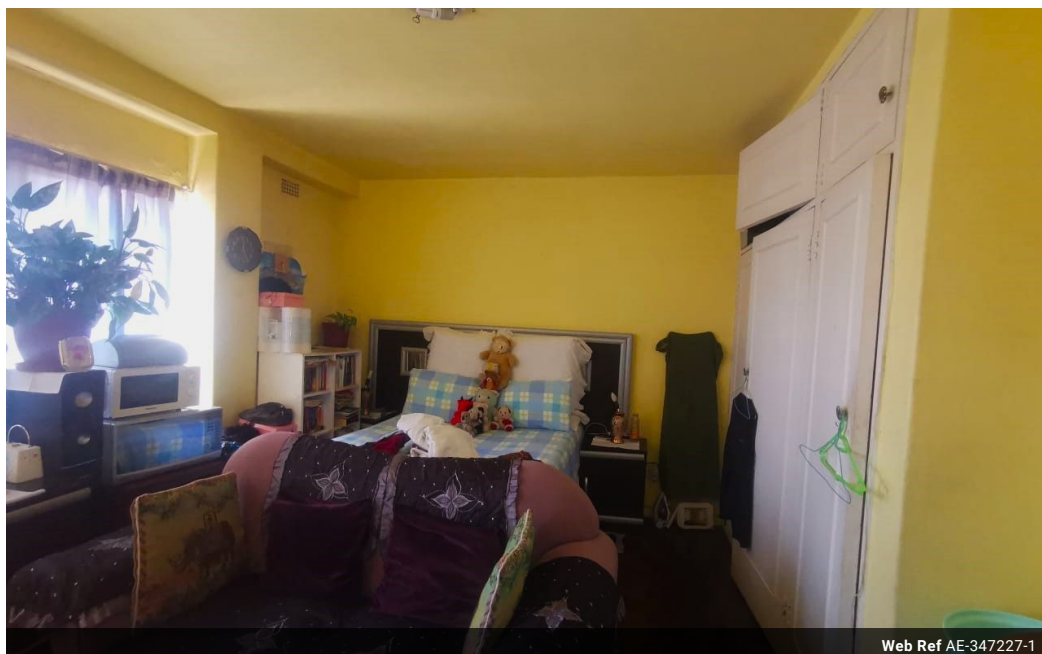
Robin Lawrence
0814224787

imaginesales01@gmail.com

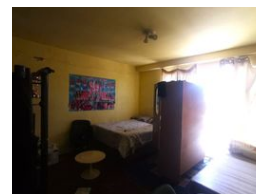
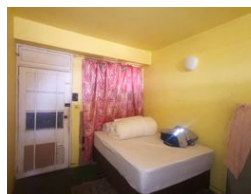
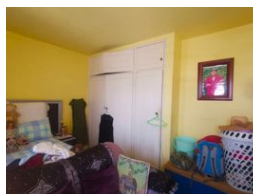
Contact Head Office (JHB, Pretoria, Cape Town and Garden Route)

+27 712982714

Unit 6 & 8 Rotherfield Trust
23 Rotherfield Road
Plumstead
7800



Web Ref AE-347227-1



R230,000



Monthly Bond Repayment R2,374.03
Calculated over 20 years at 11% with no deposit.

Transfer Costs R13,821.00 **Bond Costs** R9,510.00
These calculations are only a guide. Please ask your conveyancer for exact calculations.

Monthly Levy R1,244

PERFECT FOR THE INVESTOR BUYER!!

This spacious 95 sqm unit consists of a one bedroom flat with built in cupboards, large open lounge, kitchen, bathroom with toilet and extremely large open balcony giving you views from the top floor.

This unit is on the 12th floor of the building. One added bonus is that this unit does come with a parking bay.

The building is located in the better part of Hillbrow. The block is well positioned close to all amenities including Rand Clinic, Brendhurst Clinic, Hillbrow Police Station, Spar etc. The block is very popular with tenants due to its convenient location and easy access to transport. The block is well secured with 24 hr security.

Estimated Levy: R 1 244.00 per month.

Estimated Rental: R 6 500.00 – R 7 200 .00per month.

Features

Interior		Exterior		Sizes	
Bedrooms	1	Carports / Parkings	1	Floor Size	95m ²
Bathrooms	1	Security	Yes		
Recep. Rooms	1	Pool	No		