



Robin Lawrence
0814224787
imaginesales01@gmail.com



Abubakr Achmat
0614557025

imaginesales01@gmail.com

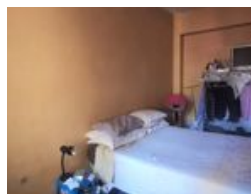
Contact Head Office (JHB, Pretoria, Cape Town and Garden Route)

+27 712982714

Unit 6 & 8 Rotherfield Trust
23 Rotherfield Road
Plumstead
7800



Web Ref BR-864957



R315,000

🛏️ 2 🚿 1

Monthly Bond Repayment R3,251.39
Calculated over 20 years at 11% with no deposit.

Transfer Costs R16,346.00 **Bond Costs** R11,560.00
These calculations are only a guide. Please ask your conveyancer for exact calculations.

Monthly Levy R1,011

2 BEDROOM UNIT UP FOR GRABS, IF YOU KNOW THE BUILDING!!!

Large 89 sqm 2 bedroom apartment with built-in cupboards, entrance hall, family bathroom, 2x enclosed balconies and parking bay allocated to the unit.

The main bedroom is massive. The unit also has 2 enclosed balconies which can and is also being utilized as 2 additional bedrooms. This is perfect for an investor looking to strengthen their portfolios, if you know the building you'd know this won't be long on the market.

The building is situated in the better part of Hillbrow. It is on the corner of Twist and Bruce Street. It is popular with investors due to the strong tenant demand and overall management of the block. It benefits from 24-hour security and underground parking.

Estimated Levy: R 1021.22

Features

Interior		Exterior		Sizes	
Bedrooms	2	Carports / Parkings	1	Floor Size	89m ²
Bathrooms	1	Security	Yes		
		Pool	No		