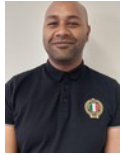




**Robin Lawrence**  
0814224787  
imaginesales01@gmail.com



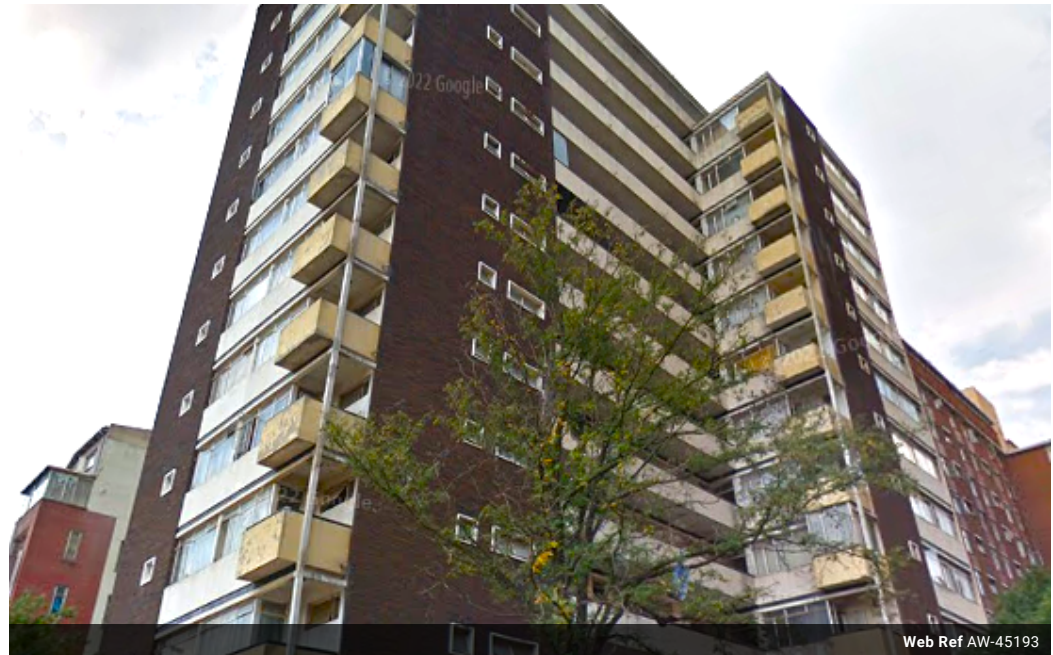
**Abubakr Achmat**  
0614557025

imaginesales01@gmail.com

Contact Head Office (JHB,  
Pretoria, Cape Town and Garden  
Route)

+27 712982714


Unit 6 & 8 Rotherfield Trust  
23 Rotherfield Road  
Plumstead  
7800



Web Ref AW-45193



**R300,000**

 3  2

**Monthly Bond Repayment** R3,096.57  
Calculated over 20 years at 11% with no deposit.

**Transfer Costs** R15,517.00 **Bond Costs** R10,985.00

These calculations are only a guide. Please ask your conveyancer for exact calculations.

**Monthly Levy** R1,600

### THREE BEDROOM IN HILLBROW NOW AVAILABLE!!

This 125 sqm unit consists of 3 bedrooms with built-in cupboards, open lounge, kitchen, bathroom, separate toilet and a shower. As an added benefit it also has an 2 enclosed balcony which could easily be used as an additional bedroom to maximize on rental.

This block benefits from CCTV cameras and tenants use a security card for gate access.

The unit has huge potential for the avid investor as it benefits tenants being centrally located close to all amenities as well as the Fire Station, major bus and taxi routes and Brenthurst Private Clinic.

Estimated Levy: R1 617.19 per month

Potential Rental: R6 300.00-R7 500.00 per month

### Features

#### Interior

Bedrooms 3  
Bathrooms 2

#### Exterior

Carports / Parkings 1  
Security Yes  
Pool No

#### Sizes

Floor Size 125m<sup>2</sup>