



**Robin Lawrence**  
0814224787  
imaginesales01@gmail.com



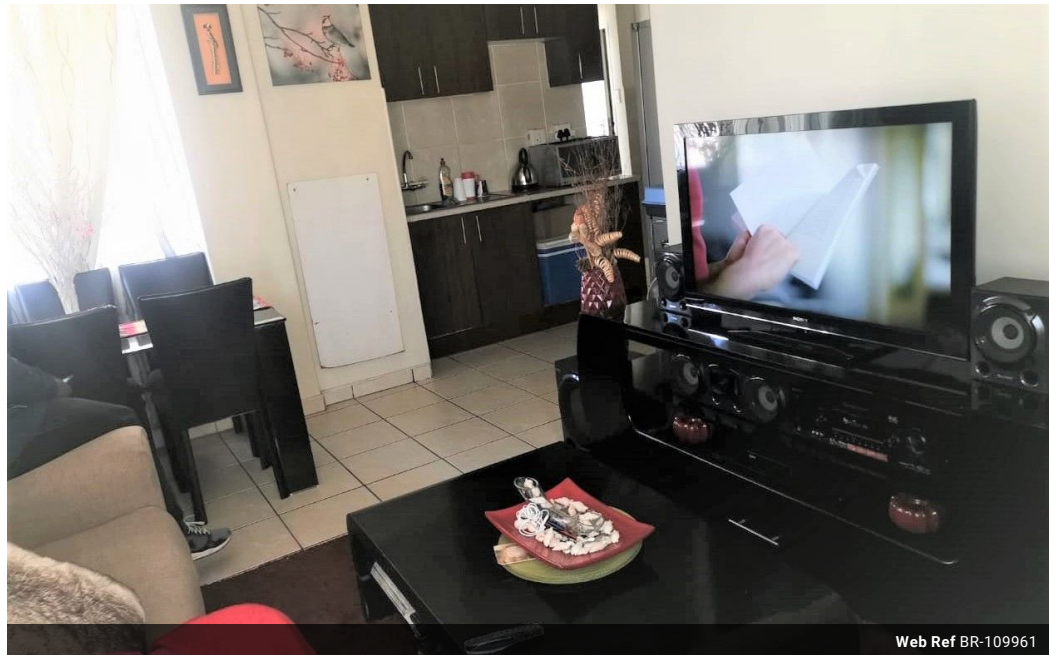
**Abubakr Achmat**  
0614557025

imaginesales01@gmail.com

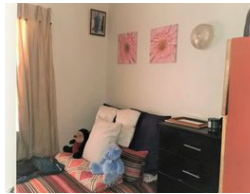
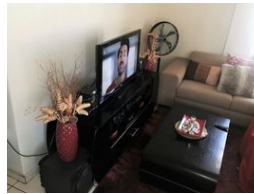
Contact Head Office (JHB,  
Pretoria, Cape Town and Garden  
Route)

+27 712982714

Unit 6 & 8 Rotherfield Trust  
23 Rotherfield Road  
Plumstead  
7800



Web Ref BR-109961



**R330,000**



**Monthly Bond Repayment** R3,406.22

Calculated over 20 years at 11% with no deposit.

**Transfer Costs** R16,346.00 **Bond Costs** R11,560.00

These calculations are only a guide. Please ask your conveyancer for exact calculations.

**Monthly Levy** R843 **Monthly Rates** R505

### INNER CITY LIVING AT ITS FINEST!!!

This spacious 44 sqm unit offers the finest of the inner city. The unit comes complete with 1 bedroom, lounge, neatly fitted kitchen, bathroom with toilet. The apartment is in a good condition throughout.

The unit is situated on the tenth floor of this stunning building and lifts are in good working order making it easily accessible.

A couple of benefits include low levies, 24hr security, security access gate as well as biometrics, giving you the ultimate piece of mind. The block also benefits from prepaid electricity which makes it ideal for investors.

The block is located in Jeppe Street(Rahima Moosa) corner of Joubert Street which is in the heart of Johannesburg City and is popular with tenants due to its proximity to all major amenities such as Carlton Centre, Johannesburg South High Court, park station and head...

### Features

#### Interior

Bedrooms	1
Bathrooms	1
Recep. Rooms	0.5

#### Exterior

Security	Yes
Pool	No

#### Sizes

Floor Size	44m <sup>2</sup>
------------	------------------