

Abubakr Achmat
0614557025
imaginesales01@gmail.com



Robin Lawrence
0814224787

imaginesales01@gmail.com

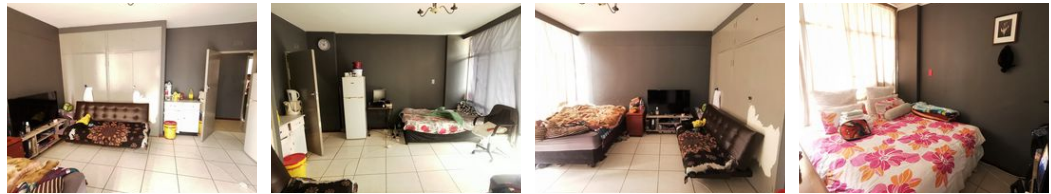
Contact Head Office (JHB, Pretoria, Cape Town and Garden Route)

+27 712982714

Unit 6 & 8 Rotherfield Trust
23 Rotherfield Road
Plumstead
7800



Web Ref BR-1358238



R385,000



Monthly Bond Repayment R3,973.93
Calculated over 20 years at 11% with no deposit.

Transfer Costs R16,806.00 **Bond Costs** R11,960.00

These calculations are only a guide. Please ask your conveyancer for exact calculations.

Monthly Levy R1,183

IDEAL FOR THE AVID INVESTOR!!!!

Here we have a spacious, very neat and well maintained 87sqm apartment that comes complete with a kitchen, 2 bedrooms both with built in cupboards, a lounge that has been partitioned into 2 additional bedrooms to maximize rental income, a bathroom with bath and toilet, a separate toilet and a huge open balcony.

The building is well managed and maintained by PAL Property Managing Agents. It is situated on the corner of Ockerse and Quartz Street and is very popular with tenants due to it's location being a stone throw away from the main bus and taxi routes and also in very close proximity to all the major amenities.

Estimated monthly levy: R 1 183

Estimated monthly rental income: R 6 500 - R 8 000

Features

Interior		Exterior		Sizes	
Bedrooms	2	Carports / Parkings	1	Floor Size	87m ²
Bathrooms	1	Security	Yes		
		Pool	No		