



**Robin Lawrence**  
0814224787  
imaginesales01@gmail.com



**Abubakr Achmat**  
0614557025

imaginesales01@gmail.com

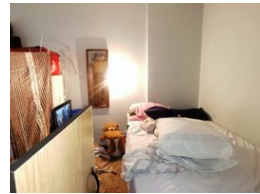
Contact Head Office (JHB,  
Pretoria, Cape Town and Garden  
Route)

+27 712982714

Unit 6 & 8 Rotherfield Trust  
23 Rotherfield Road  
Plumstead  
7800



Web Ref BR-867693



**R230,000**

1 1

**Monthly Bond Repayment** R2,374.03  
Calculated over 20 years at 11% with no deposit.

**Transfer Costs** R13,821.00 **Bond Costs** R9,510.00  
These calculations are only a guide. Please ask your conveyancer for exact calculations.

**Monthly Levy** R750

### 77SQM 1 BEDROOM UNIT UP FOR GRABS IN VERY WELL MANAGED BUILDING!!!

Lovely, well maintained and spacious 77sqm apartment comes complete with a fitted kitchen, large lockable lounge & dining area, spacious bedroom with built in cupboards, a bathroom with a bath and separate toilet and also benefits from a sunny open balcony.

The block is well managed and maintained by Letcor managing Agents. It is situated on the corners of Esselen and Klein street in Joubert Park making it extremely popular with tenants as well as the block is a stone throw away from all the major amenities and the main bus and taxi routes.

The block also benefits from 24hr security and a security gate giving you the ultimate piece of mind.

Estimated monthly levy: R 800

Estimated monthly rental income: R 4 000 - R 4 900

### Features

#### Interior

Bedrooms	1
Bathrooms	1

#### Exterior

Security	Yes
Pool	No

#### Sizes

Floor Size	77m²
------------	------