



**Robin Lawrence**  
0814224787  
imaginesales01@gmail.com



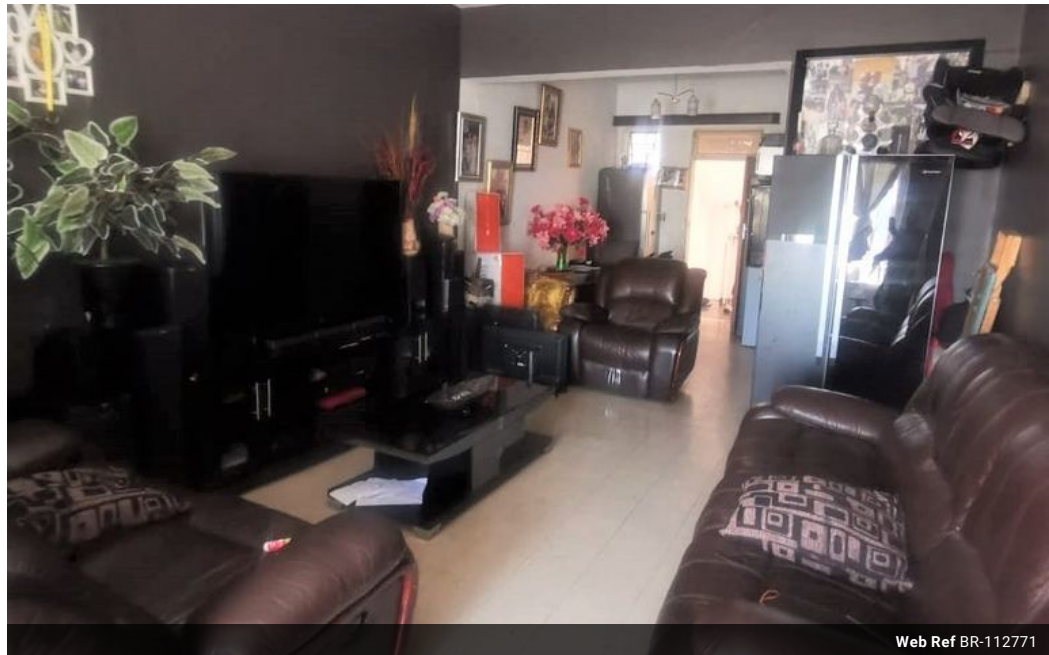
**Abubakr Achmat**  
0614557025

imaginesales01@gmail.com

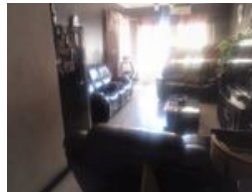
Contact Head Office (JHB,  
Pretoria, Cape Town and Garden  
Route)

**+27 712982714**

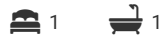
Unit 6 & 8 Rotherfield Trust  
23 Rotherfield Road  
Plumstead  
7800



Web Ref BR-112771



**R270,000**



**Monthly Bond Repayment** R2,786.91  
Calculated over 20 years at 11% with no deposit.

**Transfer Costs** R15,517.00    **Bond Costs** R10,985.00

These calculations are only a guide. Please ask your conveyancer for exact calculations.

**Monthly Levy** R1,153

### BEAUTIFUL LARGE 1 BEDROOM UNIT AVAILABLE IN SECURE BUILDING!!!

Beautiful and neat, 73sqm apartment that comes complete with a fitted kitchen, large lounge, 1 large bedroom with built-in cupboards, a bathroom with a separate toilet and a sunny open balcony.

The building is very secure benefitting from 24 hr security as well as an access controlled gate. The block is also very well managed and maintained by Phillip Heitan Property Management and has recently been painted.

The building is situated on the corner of Nugget and Smit street in Joubert Park also making it very popular with tenants due to its central location being close to all the major amenities and main bus and taxi routes.

Estimated monthly levy: R 1153.24

Current rental income: R 3500 with potential for much more.

### Features

#### Interior

Bedrooms	1
Bathrooms	1
Recep. Rooms	1

#### Exterior

Carports / Parkings	1
Security	Yes
Pool	No

#### Sizes

Floor Size	73m²
------------	------