



Robin Lawrence
0814224787
imaginesales01@gmail.com



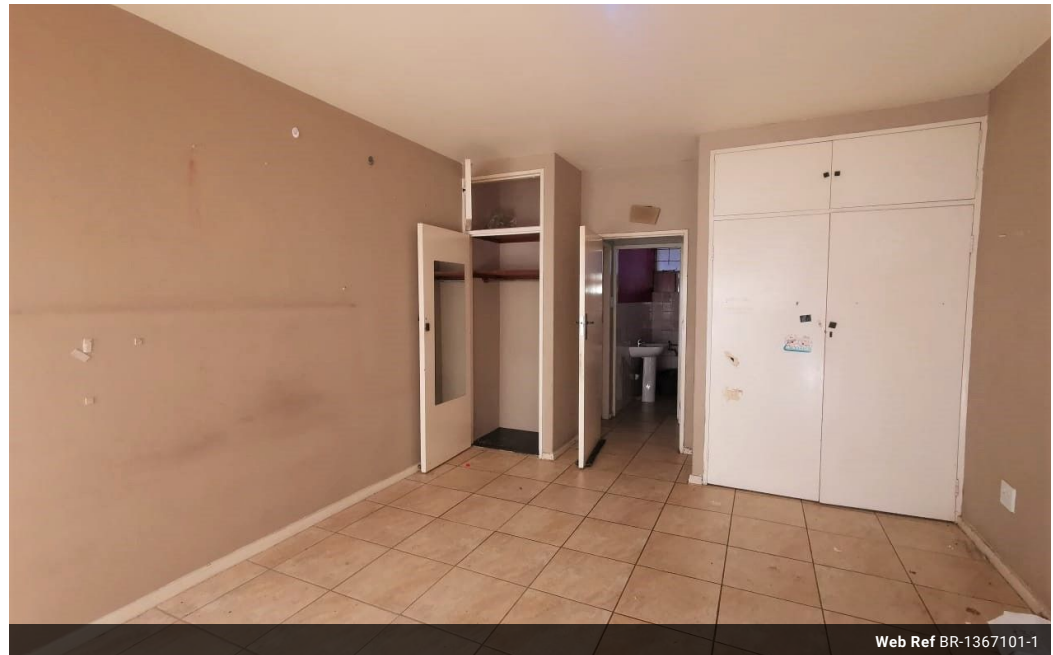
Abubakr Achmat
0614557025

imaginesales01@gmail.com

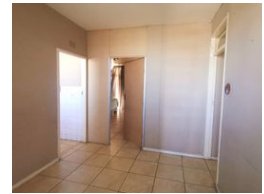
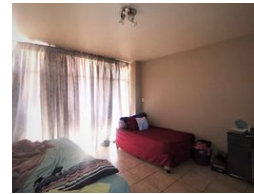
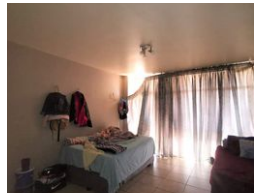
Contact Head Office (JHB,
Pretoria, Cape Town and Garden
Route)

+27 712982714

Unit 6 & 8 Rotherfield Trust
23 Rotherfield Road
Plumstead
7800



Web Ref BR-1367101-1



R240,000



Monthly Bond Repayment R2,477.25
Calculated over 20 years at 11% with no deposit.

Transfer Costs R13,821.00 **Bond Costs** R9,510.00
These calculations are only a guide. Please ask your conveyancer for exact calculations.

Monthly Levy R1,321

PERFECT INVESMENT AT A GREAT PRICE!!!

Lovely, spacious 76 sqm unit consists of 2 bedrooms, small lounge, bathroom, and separate toilet with a large open balcony which can be accessed from both bedrooms, perfect for those sunny summer days.

The block is well managed and maintained by compeg managing agents and benefits from 24hr security and an access controlled entrance gate.

The block is very popular with tenants due to it being centrally located and within walking distance of all major amenities including St Endas Secondary School, clinics, shopping centres etc..

Levy - R1003.00
Sewerage - R308.00
CSOS Levy - R10.06

Water & electricity are metered so it depends on usage.

Current Rent: R 5 500 per month

Features

Interior		Exterior		Sizes	
Bedrooms	1	Carports / Parkings	1	Floor Size	76m ²
Bathrooms	1	Security	Yes		
Recep. Rooms	1	Pool	No		