

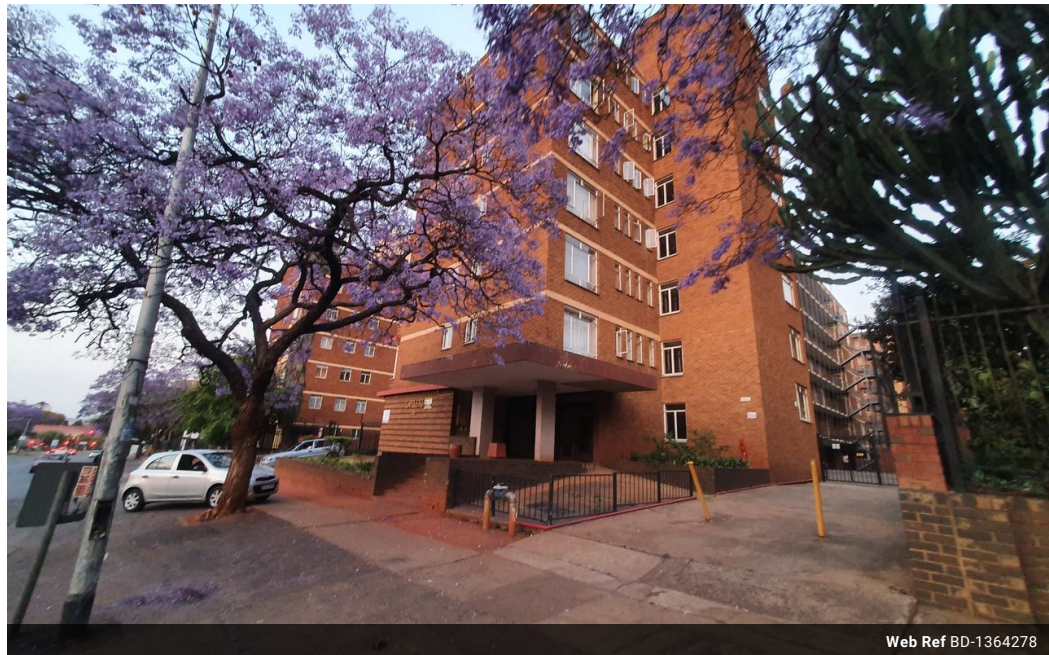


Shewaan Abarder
0760925545
imaginesales02@gmail.com

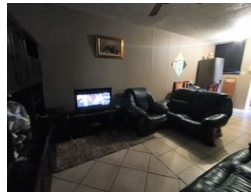
Contact Head Office (JHB,
Pretoria, Cape Town and Garden
Route)

+27 712982714

Unit 6 & 8 Rotherfield Trust
23 Rotherfield Road
Plumstead
7800



Web Ref BD-1364278



R350,000

 1.5  1

Monthly Bond Repayment R3,612.66
Calculated over 20 years at 11% with no deposit.

Transfer Costs R16,346.00 **Bond Costs** R11,560.00

These calculations are only a guide. Please ask your conveyancer for exact calculations.

Monthly Levy R2,196 **Monthly Rates** R129

MODERN LIVING !!! WITH A NATURAL TWIST!!!

Here we have a spacious 73 sqm 1.5 bedroom apartment. This flat is in good condition on the 1st floor. With a large sitting room that can be partitioned for extra rental income. The enclosed balcony is being used as a half-room & was locked at the time of evaluation but will be made available upon viewing. The main bedroom is very big and has built-in cupboards. The kitchen is neatly fitted.

This apartment block has a spacious reception at the entrance. The lifts are in working condition. Access into the block is controlled with the use of a tag.

The building is located on Steve Biko Road, within walking distance to basic amenities such as Barclays square, Sunnyside primary school, UNISA, and Sasol garage, and with good access to transport.

Estimated Monthly Rental – R 6 000 – R 6 500 per month.

Estimated Monthly...

Features

Interior

Bedrooms	1.5
Bathrooms	1
Recep. Rooms	1

Exterior

Carports / Parkings	1
Security	Yes
Pool	No

Sizes

Floor Size	73m²
------------	------