

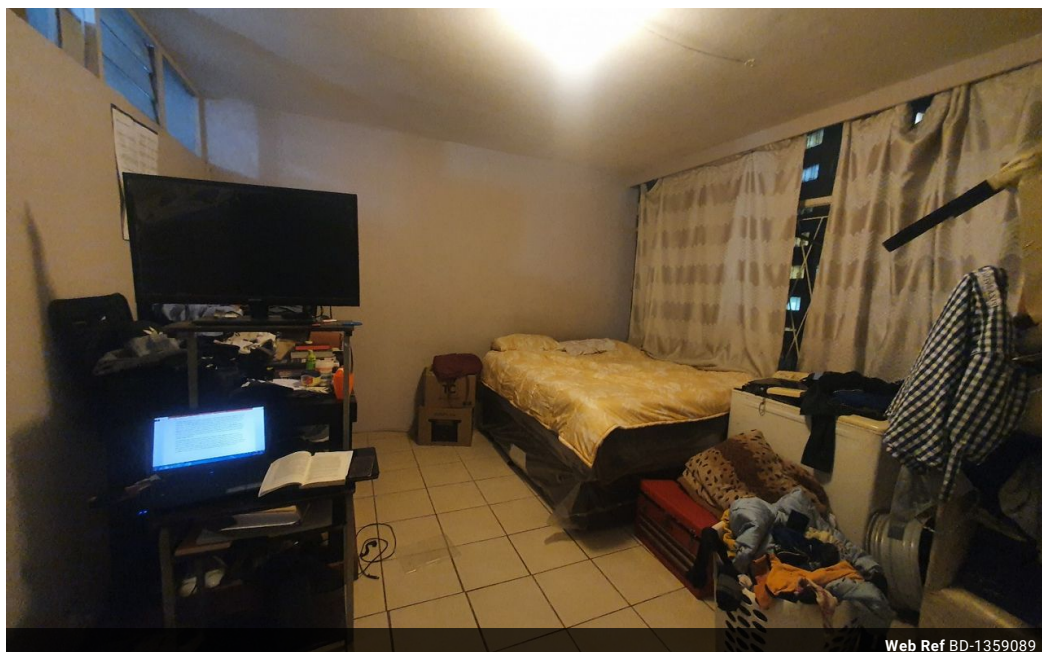


**Shewaan Abarder**  
0760925545  
imaginesales02@gmail.com

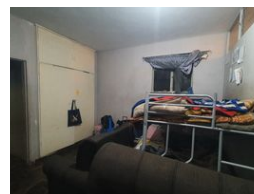
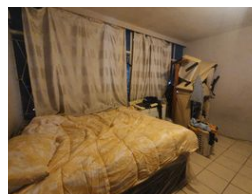
Contact Head Office (JHB,  
Pretoria, Cape Town and Garden  
Route)

+27 712982714

Unit 6 & 8 Rotherfield Trust  
23 Rotherfield Road  
Plumstead  
7800



Web Ref BD-1359089



R290,000

0.5 1

**Monthly Bond Repayment** R2,993.35

Calculated over 20 years at 11% with no deposit.

**Transfer Costs** R15,517.00 **Bond Costs** R10,985.00

These calculations are only a guide. Please ask your conveyancer for exact calculations.

**Monthly Levy** R1,891

### MORE BACHELOR FOR YOUR PAD!!!

Here we have a 48 sqm studio apartment. This is in good condition on the ground floor. With a large lounge area ideal for entertaining. The main bedroom is huge and has built-in cupboards. The kitchen is neatly fitted.

This apartment block has a spacious reception at the entrance. The lifts are in working condition. Access into the block is controlled with the use of a tag.

The building is located on Troy Street, within walking distance of basic amenities such as Barclays square, Sunnyside Primary School, UNISA, Sasol garage, and with good access to transport.

Estimated Monthly Rental – R 4 500 – R 5 000 per month.

Estimated Monthly Levy – R 1 892 per month.

### Features

#### Interior

Bedrooms	0.5
Bathrooms	1
Recep. Rooms	0.5

#### Exterior

Carports / Parkings	1
Security	Yes
Pool	No

#### Sizes

Floor Size	48m²
------------	------