



**Shewaan Abarder**  
0760925545  
imaginesales02@gmail.com

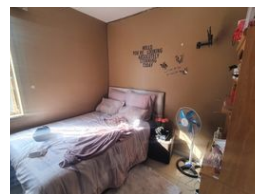
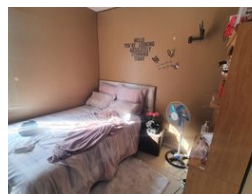
Contact Head Office (JHB,  
Pretoria, Cape Town and Garden  
Route)

+27 712982714

Unit 6 & 8 Rotherfield Trust  
23 Rotherfield Road  
Plumstead  
7800



Web Ref BA-104264



R465,000

1.5 1

**Monthly Bond Repayment** R4,799.68

Calculated over 20 years at 11% with no deposit.

**Transfer Costs** R19,049.00 **Bond Costs** R13,910.00

These calculations are only a guide. Please ask your conveyancer for exact calculations.

**Monthly Levy** R1,302 **Monthly Rates** R123

WHEN THE PERFECT OPPORTUNITY IS STARRING YOU IN THE FACE!!! GRAB IT!!

Here we have a spacious 64 sqm 1.5 bedroom apartment. This flat is in good condition on the 1st floor. The spacious lounge has been partitioned into 2 extra bedrooms essentially making this a 3.5 bedroom apartment. The main bedroom is fully tiled with built-in cupboards & the enclosed balcony is being used as a half room. The kitchen is neatly fitted.

This apartment block has a spacious reception at the entrance. The lifts are in working condition. Access into the block is controlled with the use of a tag.

The building is located on Walker Street, within walking distance of basic amenities such as Engen Millenium Walker, Sunnyside primary school, UNISA, and Sasol garage, and with good access to transport.

Estimated Monthly Rental – R 6 000 – R 7 000 per month.

Estimated Monthly Levy – R 1 302.33 per month.

## Features

### Interior

|              |     |
|--------------|-----|
| Bedrooms     | 1.5 |
| Bathrooms    | 1   |
| Recep. Rooms | 1   |

### Exterior

|                     |     |
|---------------------|-----|
| Carports / Parkings | 1   |
| Security            | Yes |
| Pool                | No  |

### Sizes

|            |      |
|------------|------|
| Floor Size | 64m² |
|------------|------|