

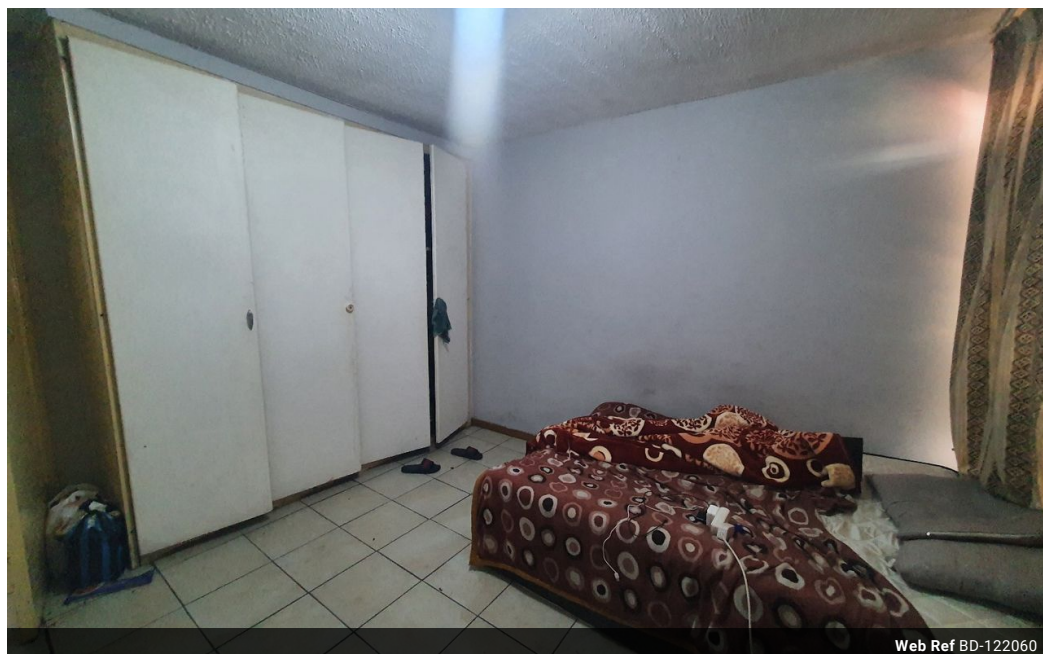


Shewaan Abarder
0760925545
imaginesales02@gmail.com

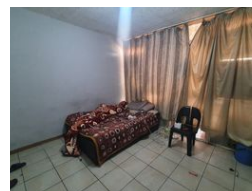
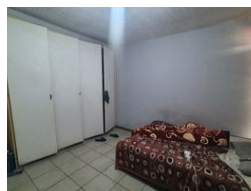
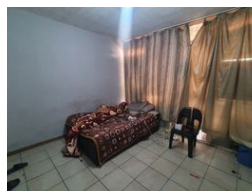
Contact Head Office (JHB, Pretoria, Cape Town and Garden Route)

+27 712982714

Unit 6 & 8 Rotherfield Trust
23 Rotherfield Road
Plumstead
7800



Web Ref BD-122060



R540,000

 2.5  2

Monthly Bond Repayment R5,573.82
Calculated over 20 years at 11% with no deposit.

Transfer Costs R21,217.00 **Bond Costs** R15,795.00

These calculations are only a guide. Please ask your conveyancer for exact calculations.

Monthly Levy R1,012 **Monthly Rates** R194

IF THE PERFECT RETURN ON YOUR INVESTMENT IS WHAT YOU ARE LOOKING FOR!!!

Here we have a spacious 90 sqm 2.5 bedroom apartment. This flat is in fair condition on the 7th floor. A large sitting room has been partitioned into 3 bedrooms making this a 5.5 bedroom flat. This is a bonus for extra rental income and has an enclosed balcony which is used as a half room. The main bedroom is very big and has built-in cupboards. The kitchen is neatly fitted. The 2 partitioned bedrooms will be made available upon viewing as they were locked at the time. The 2 bathrooms are ideal for the unit being multi-tenanted.

This apartment block has a spacious reception at the entrance. The lifts are in working condition. The security guards are on-site 24hrs. Access into the block is controlled with the use of a tag.

The building is located on the Corner of Visagie & Kotze Street within walking distance of basic...

Features

Interior		Exterior		Sizes	
Bedrooms	2.5	Carports / Parkings	1	Floor Size	90m ²
Bathrooms	2	Security	Yes		
Recep. Rooms	1	Pool	No		