



**Shewaan Abarder**  
0760925545  
imaginesales02@gmail.com

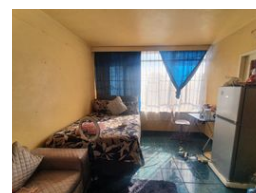
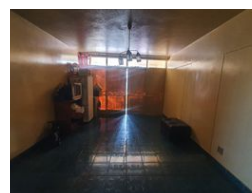
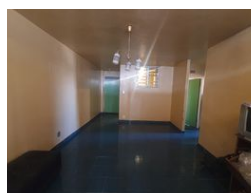
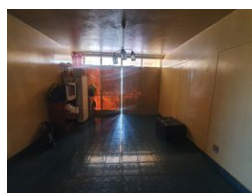
Contact Head Office (JHB, Pretoria, Cape Town and Garden Route)

+27 712982714

Unit 6 & 8 Rotherfield Trust  
23 Rotherfield Road  
Plumstead  
7800



Web Ref AF-105073



**R480,000**

2.5 1.5

**Monthly Bond Repayment** R4,954.50  
Calculated over 20 years at 11% with no deposit.

**Transfer Costs** R19,049.00 **Bond Costs** R13,910.00  
These calculations are only a guide. Please ask your conveyancer for exact calculations.

**Monthly Levy** R2,032 **Monthly Rates** R232

**A COMMUTERS DREAM!!! GOOD RETURNS!!!**

Here we have a spacious 84 sqm 2.5 bedroom apartment. This flat is in good condition on the 14th floor, with a large sitting room and an enclosed balcony used as a half room, a bonus for extra rental income. The main bedroom is huge and has built-in cupboards. The kitchen is neatly fitted. The separate bathroom & toilet makes the unit ideal for being multi-tenanted.

This apartment block has a spacious reception at the entrance. The lifts are in a working condition. The security guards are there 24hrs. Access to the block is controlled with the use of a tag.

The building is located on Bosman Street Pretoria Central, within walking distance of basic amenities such as City Place Shopping Mall, Pretoria Post Office, Louis Pasteur Private Hospital, Rosebank College Pretoria Campus, Paul Kruger Statue, Burgers Park, and with...

**Features**

Interior		Exterior		Sizes	
Bedrooms	2.5	Carports / Parkings	1	Floor Size	84m <sup>2</sup>
Bathrooms	1.5	Security	Yes		
Recep. Rooms	1	Pool	No		

