

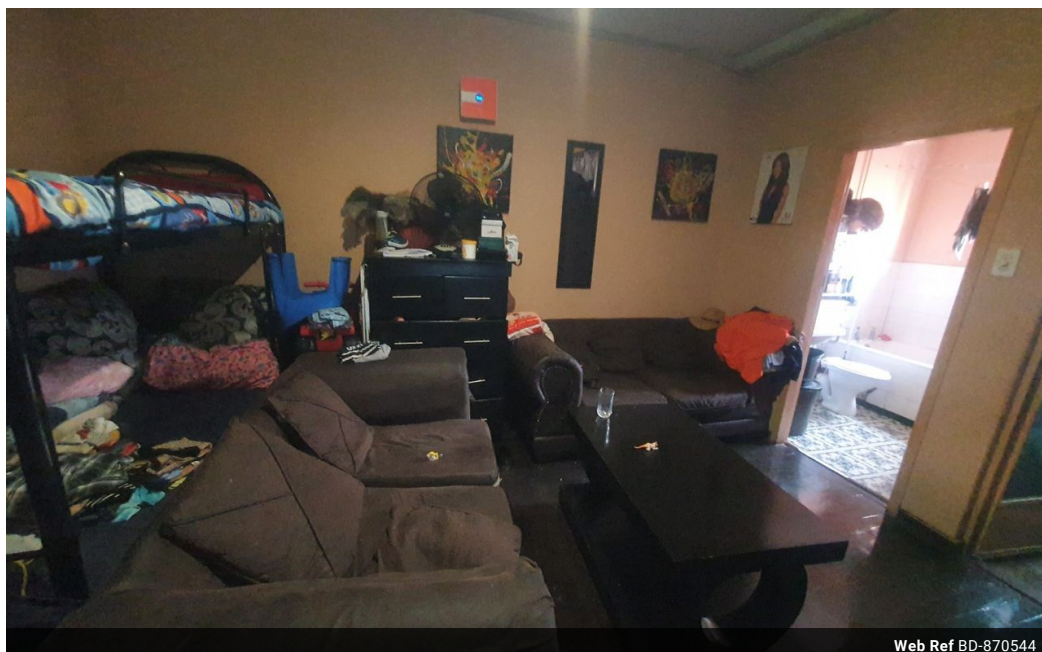


**Shewaan Abarder**  
0760925545  
imaginesales02@gmail.com

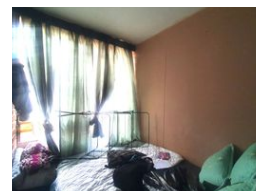
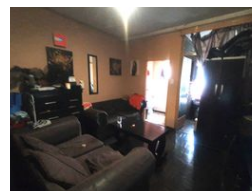
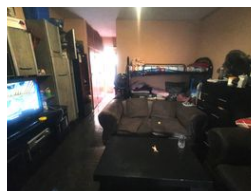
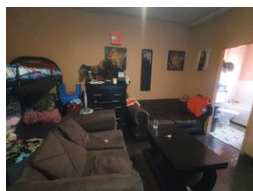
Contact Head Office (JHB, Pretoria, Cape Town and Garden Route)

+27 712982714

Unit 6 & 8 Rotherfield Trust  
23 Rotherfield Road  
Plumstead  
7800



Web Ref BD-870544



R300,000

 0.5  1

**Monthly Bond Repayment** R3,096.57  
Calculated over 20 years at 11% with no deposit.

**Transfer Costs** R15,517.00 **Bond Costs** R10,985.00

These calculations are only a guide. Please ask your conveyancer for exact calculations.

**Monthly Levy** R1,154 **Monthly Rates** R41

**MORE BACHELOR FOR YOUR PAD!!! LOW RISK!!!**

Here, we have a spacious 36 sqm bachelor apartment on the 6th floor. This flat is in fair condition and has an enclosed balcony that is being used as a half-room. The kitchen needs some TLC.

This apartment block has a spacious reception at the entrance. The lifts are in working condition. Security guards are on-site 24 hours a day. Access to the block is controlled with a tag.

The building is located on Sophie De Bruyn Street. Pretoria Central, within walking distance to basic amenities such as Pretoria Central Police Station, Tshwane North TVET College, Mc Donalds Skinner Street, Department Of Home Affairs Shoprite Usave, Engen Garage, and with good access to transport.

Estimated Monthly Rental – R 4 000 – R 4 500 per month.

Estimated Monthly Levy – R 1 154.34 per month.

**Features**

Interior		Exterior		Sizes	
Bedrooms	0.5	Carports / Parkings	1	Floor Size	36m <sup>2</sup>
Bathrooms	1	Security	Yes		
Recep. Rooms	0.5	Pool	No		