

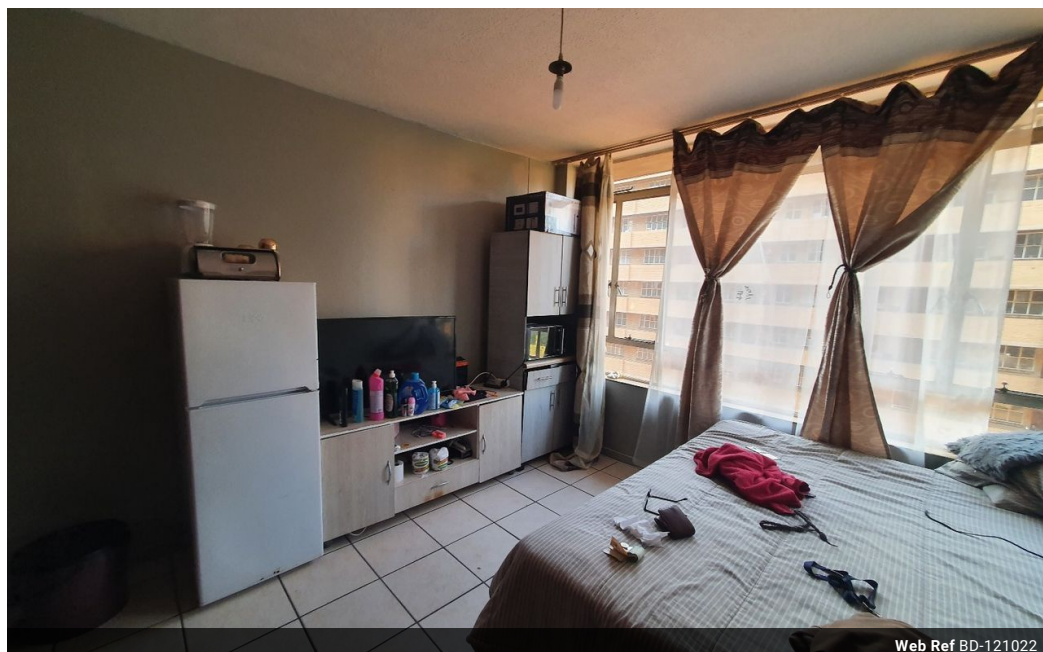


Shewaan Abarder
0760925545
imaginesales02@gmail.com

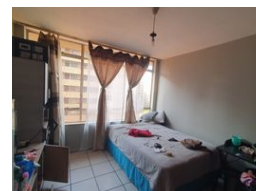
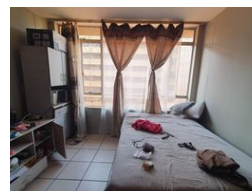
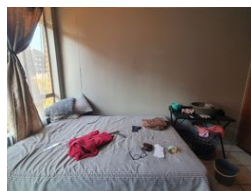
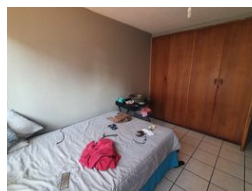
Contact Head Office (JHB,
Pretoria, Cape Town and Garden
Route)

+27 712982714

Unit 6 & 8 Rotherfield Trust
23 Rotherfield Road
Plumstead
7800



Web Ref BD-121022



R470,000

 2  1.5

Monthly Bond Repayment R4,851.29
Calculated over 20 years at 11% with no deposit.

Transfer Costs R19,049.00 **Bond Costs** R13,910.00

These calculations are only a guide. Please ask your conveyancer for exact calculations.

Monthly Levy R2,294 **Monthly Rates** R235

CALLING ALL INVESTORS!!! MAKE THAT SMART CHOICE!!!

Here we have a spacious 67sqm 2 bedroom apartment. This flat is in good condition on the 4th floor, with a large sitting room partitioned into an extra bedroom. This is a bonus for additional rental income. The main bedroom is huge and has built-in cupboards. 2 bedrooms were locked but will be available upon viewing. The kitchen is neatly fitted. The separate bathroom & toilet make this unit ideal for being multi-tenanted. The open balcony is ideal for relaxing after a long day's work.

This apartment block has a spacious reception at the entrance. The lifts are in working condition. The security guards are on-site 24hrs. Access into the block is controlled with the use of a tag.

The building is located at Scheiding Street PTA Central, within walking distance of basic amenities such as Mr. Price, Chicken Licken Paul Kruger...

Features

Interior

Bedrooms	2
Bathrooms	1.5
Recep. Rooms	1

Exterior

Carports / Parkings	1
Security	Yes
Pool	No

Sizes

Floor Size	67m ²
------------	------------------