



Shewaan Abarder
0760925545
imaginesales02@gmail.com



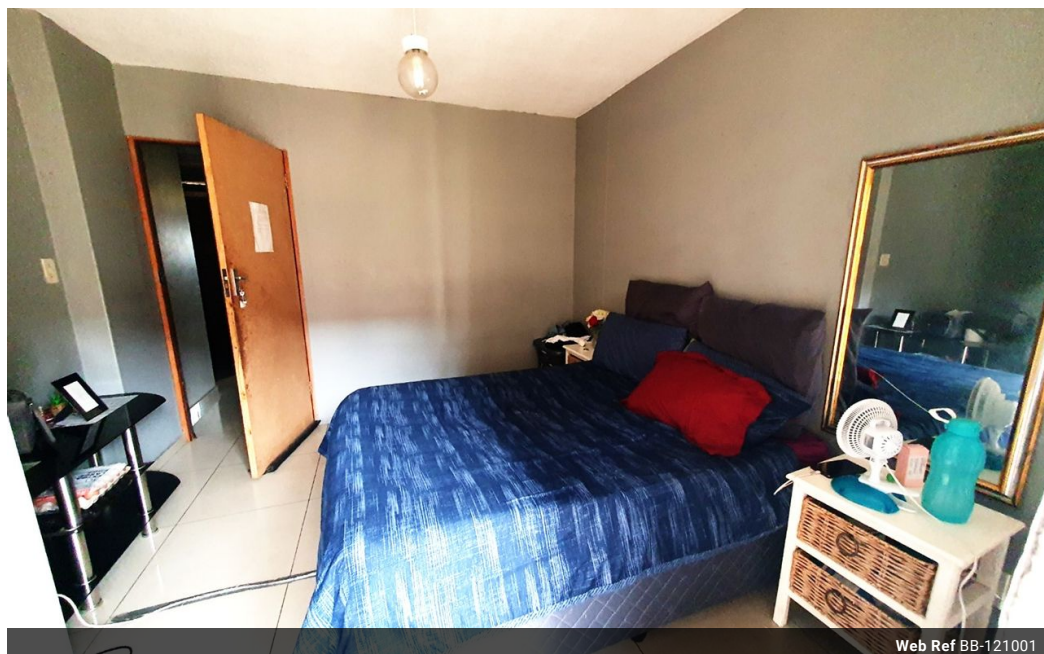
Crystal Cupido
0000000000

imaginesales02@gmail.com

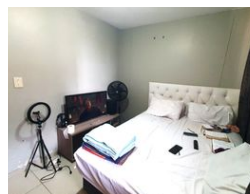
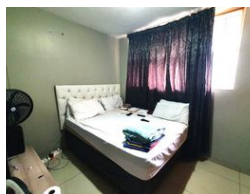
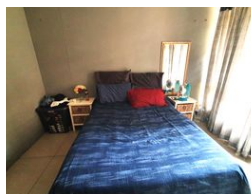
Contact Head Office (JHB,
Pretoria, Cape Town and Garden
Route)

+27 712982714

Unit 6 & 8 Rotherfield Trust
23 Rotherfield Road
Plumstead
7800



Web Ref BB-121001



R595,000

2 1.5

Monthly Bond Repayment R6,141.52
Calculated over 20 years at 11% with no deposit.

Transfer Costs R21,217.00 **Bond Costs** R15,795.00

These calculations are only a guide. Please ask your conveyancer for exact calculations.

Monthly Levy R2,578 **Monthly Rates** R235

STUNNING 2 BEDROOM WITH A PARTITIONED ROOM MAKING IT 3 BEDROOMS!

Beautiful 67sqm 2 bedroom apartment. This property is in good condition on the 2nd floor. With a large sitting room that has been partitioned into an extra bedroom. Essentially making this a 3-bedroom apartment. This is a bonus for extra rental income. The main bedroom is very big and has built-in cupboards. The kitchen is neatly fitted. The separate bathroom & toilet make this unit ideal for being multi-tenanted. The open balcony is ideal for relaxing after a long day's work.

This apartment block has a spacious reception at the entrance. The lifts are in working condition. The security guards are on-site 24hrs. Access into the block is controlled with the use of a tag.

The building is located at Scheiding Street PTA Central, within walking distance of basic amenities such as Mr. Price, Chicken Licken Paul Kruger Pretoria...

Features

Interior

Bedrooms	2
Bathrooms	1.5
Recep. Rooms	1

Exterior

Carports / Parkings	1
Security	Yes
Pool	No

Sizes

Floor Size	67m²
------------	------