

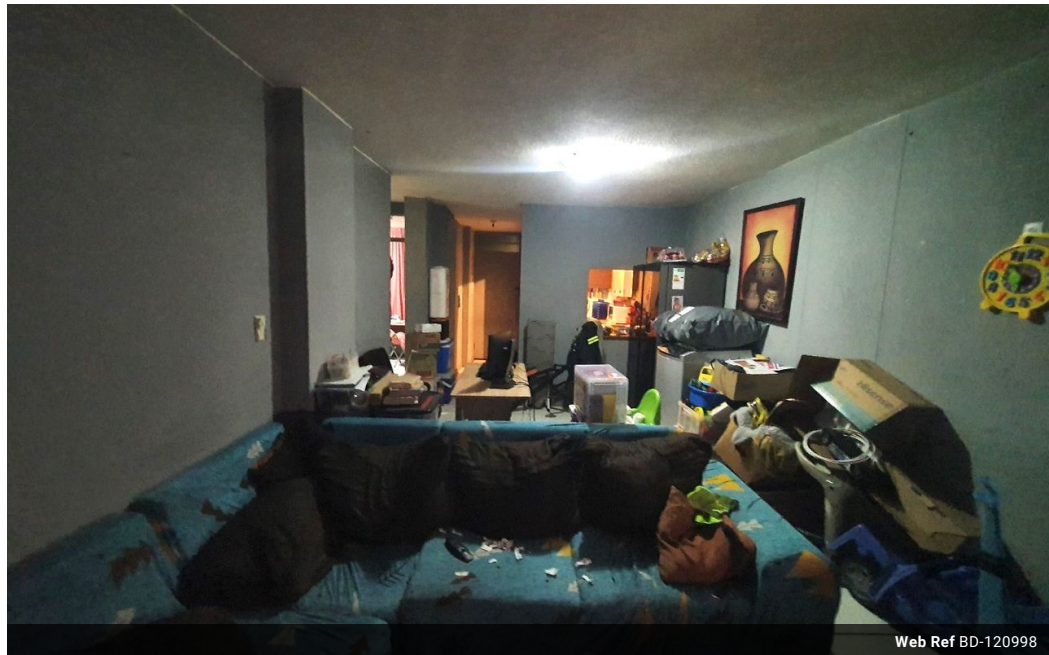


Shewaan Abarder
0760925545
imaginesales02@gmail.com

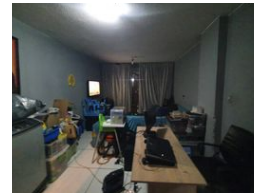
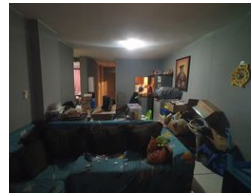
Contact Head Office (JHB,
Pretoria, Cape Town and Garden
Route)

+27 712982714


Unit 6 & 8 Rotherfield Trust
23 Rotherfield Road
Plumstead
7800



Web Ref BD-120998



R510,000

 2  1.5

Monthly Bond Repayment R5,264.16
Calculated over 20 years at 11% with no deposit.

Transfer Costs R21,217.00 **Bond Costs** R15,795.00

These calculations are only a guide. Please ask your conveyancer for exact calculations.

Monthly Levy R2,294 **Monthly Rates** R235

THE INVESTMENT WITH GOOD EARNING POTENTIAL!!!

Here we have a spacious 67sqm 2 bedroom apartment. This flat is in good condition on the 1st floor, with a large sitting room ideal for entertaining. This is a bonus for extra rental income. The main bedroom is huge and has built-in cupboards. The kitchen is neatly fitted. The separate bathroom & toilet make this unit ideal for being multi-tenanted. The open balcony is ideal for relaxing after a long day's work.

This apartment block has a spacious reception at the entrance. The lifts are in working condition. The security guards are on-site 24hrs. Access into the block is controlled with the use of a tag.

The building is located at Scheiding Street PTA Central, within walking distance of basic amenities such as Mr. Price, Chicken Licken Paul Kruger Pretoria Central Fast Food, Caltex Garage Smith Auto Wheels, OK Express...

Features

| Interior | | Exterior | | Sizes | |
|--------------|-----|---------------------|-----|------------|------------------|
| Bedrooms | 2 | Carports / Parkings | 1 | Floor Size | 67m ² |
| Bathrooms | 1.5 | Security | Yes | | |
| Recep. Rooms | 1 | Pool | No | | |