

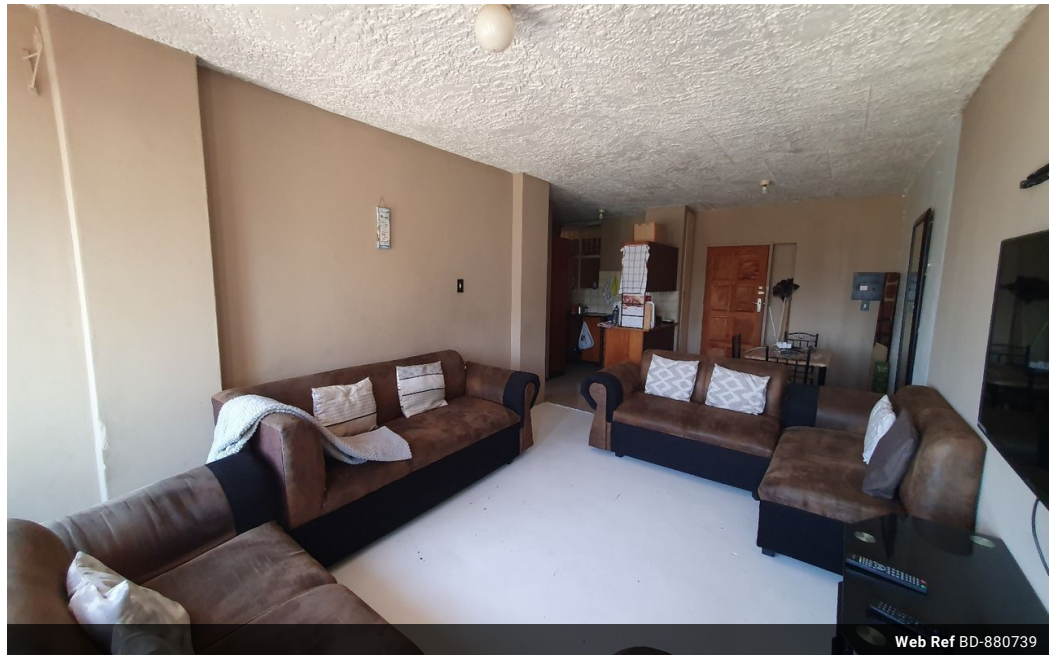


Shewaan Abarder
0760925545
imaginesales02@gmail.com

Contact Head Office (JHB,
Pretoria, Cape Town and Garden
Route)

+27 712982714

Unit 6 & 8 Rotherfield Trust
23 Rotherfield Road
Plumstead
7800



Web Ref BD-880739



R310,000



Monthly Bond Repayment R3,199.78

Calculated over 20 years at 11% with no deposit.

Transfer Costs R16,346.00 **Bond Costs** R11,560.00

These calculations are only a guide. Please ask your conveyancer for exact calculations.

Monthly Levy R1,117 **Monthly Rates** R76

THE PERFECT INVESTMENT HAS COME YOUR WAY!!! DON'T HESITATE!!!

Here we have a spacious 52 sqm 1 bedroom apartment. This flat is in good condition on the 2nd floor. With a large sitting room Ideal for entertaining. The main bedroom is very big and has built-in cupboards. The kitchen is neatly fitted.

This apartment block has a spacious reception at the entrance. Access into the block is controlled with the use of a tag.

The building is located at 259 Ketjen Street Pretoria West, within walking distance of basic amenities, such as Quagga Shopping Centre, Kit Kat Cash & Carry Pretoria West, Weskoppies Hospital, Build It, Pilditch Stadium, and with good access to transport.

Estimated Monthly Rental – R 4 000 – R 5 000 per month.

Estimated Monthly Levy – R 1 117.27 per month.

Features

Interior

Bedrooms	1
Bathrooms	1
Recep. Rooms	1

Exterior

Carports / Parkings	1
Security	Yes
Pool	No

Sizes

Floor Size	52m²
------------	------