



Shewaan Abarder
0760925545
imaginesales02@gmail.com

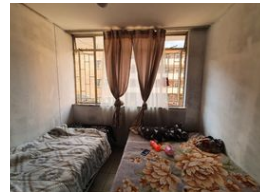
Contact Head Office (JHB,
Pretoria, Cape Town and Garden
Route)

+27 712982714

Unit 6 & 8 Rotherfield Trust
23 Rotherfield Road
Plumstead
7800



Web Ref BD-116650



R430,000

🛏 2 🚿 1 🚗 1

Monthly Bond Repayment R4,438.41
Calculated over 20 years at 11% with no deposit.

Transfer Costs R17,928.00 **Bond Costs** R12,935.00

These calculations are only a guide. Please ask your conveyancer for exact calculations.

Monthly Levy R1,872 **Monthly Rates** R199

THE PERFECT START UP INVESTMENT - TRENDY FRESH!!!

This stunning and bright 2 bedroom flat with built in cupboards in both bedrooms benefits from an impressive lounge area and a very neat fitted kitchen. The bathroom also accommodates a toilet. This amazing apartment is situated on the 1st floor of this well maintained building and boasts of its own exclusive garage parking.

This outstanding building is located just one block away from corner of Bourke and Jorissen Street, in the heart of basic amenities such as Barclay Square, Devenish Street Train Station, Sunnyside Primary, Mediclinic, Engen Garage and it is within walking distance to transport.

Estimated Monthly Rental - R 5 500 - R 6 500 per month.

Estimated Monthly Levy - R 1 872.82 per month.

Features

Interior		Exterior		Sizes	
Bedrooms	2	Garages	1	Floor Size	55m ²
Bathrooms	1	Security	Yes		
Recep. Rooms	1	Pool	No		