

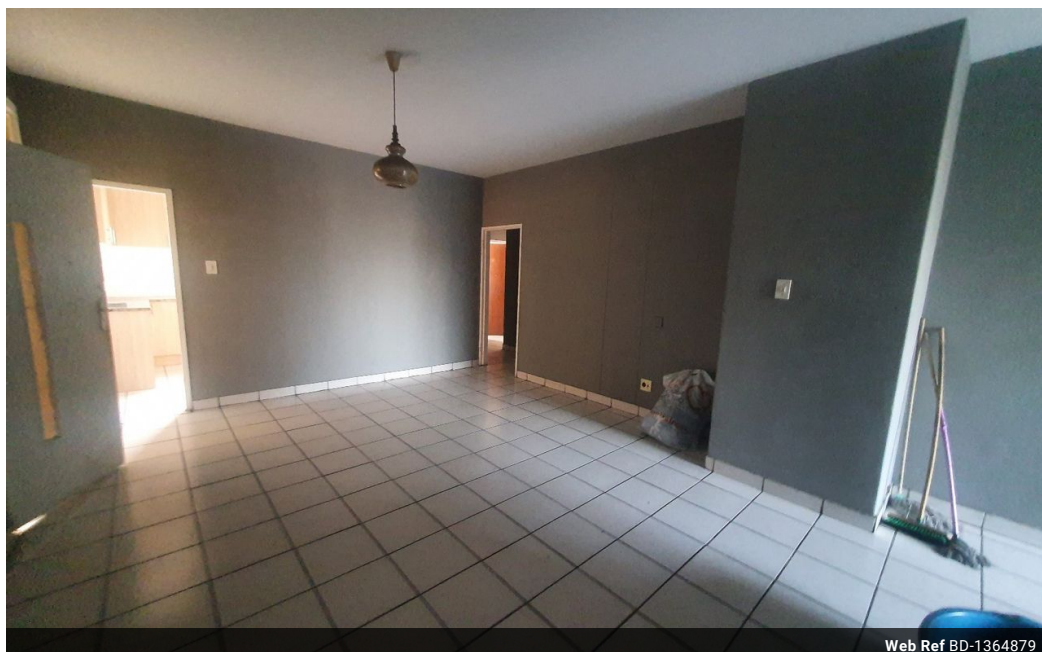


Shewaan Abarder
0760925545
imaginesales02@gmail.com

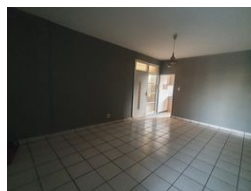
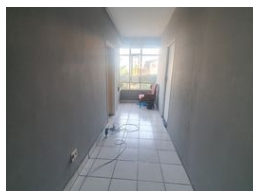
Contact Head Office (JHB, Pretoria, Cape Town and Garden Route)

+27 712982714



Unit 6 & 8 Rotherfield Trust
23 Rotherfield Road
Plumstead
7800



Web Ref BD-1364879



R560,000

 2.5  1

Monthly Bond Repayment R5,780.25
Calculated over 20 years at 11% with no deposit.

Transfer Costs R21,217.00 **Bond Costs** R15,795.00
These calculations are only a guide. Please ask your conveyancer for exact calculations.

Monthly Levy R3,332 **Monthly Rates** R368

Rare Opportunity Awaits You!

Spacious 120 sqm has 2.5 bedrooms. This flat is in great condition on the 1st floor. With a large sitting room that has been partitioned for extra rental income and has an enclosed balcony that is used as a half room. The main bedroom is very big and has built-in cupboards. The kitchen is neatly fitted. The building has a well-maintained swimming pool area. This flat has an exclusive use parking bay.

This apartment block has a spacious reception at the entrance. The lifts are in working condition. The security guards are there 24 hrs. Access into the block is controlled with the use of a tag.

The building is located at 483 Jorrissen Street Sunnyside, within walking distance to basic amenities such as the Areyeng bus stop and shops.

Estimated Monthly Levy – R 3332.08 per month.

Estimated Monthly Rental – R 7 000 – R...

Features

| Interior | | Exterior | | Sizes | |
|--------------|-----|---------------------|-----|------------|-------------------|
| Bedrooms | 2.5 | Carports / Parkings | 1 | Floor Size | 120m ² |
| Bathrooms | 1 | Security | Yes | | |
| Recep. Rooms | 1 | Pool | No | | |