

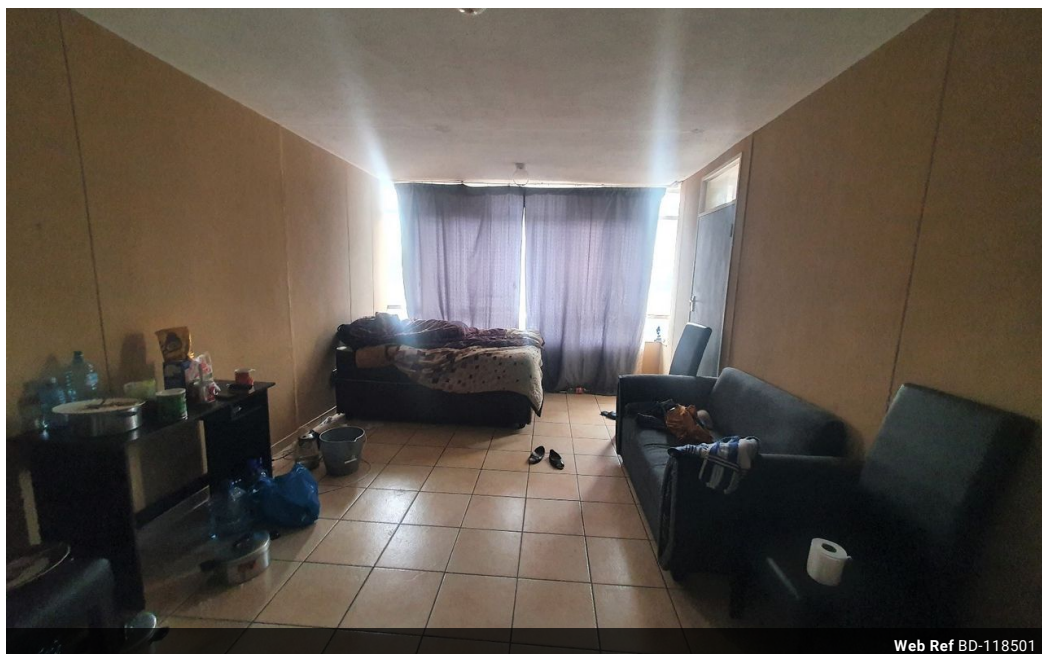


Shewaan Abarder
0760925545
imaginesales02@gmail.com

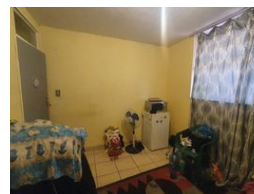
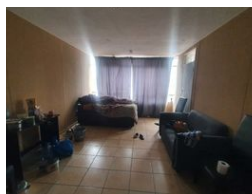
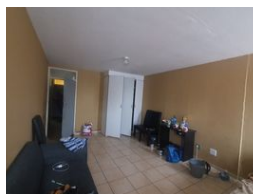
Contact Head Office (JHB,
Pretoria, Cape Town and Garden
Route)

+27 712982714

Unit 6 & 8 Rotherfield Trust
23 Rotherfield Road
Plumstead
7800



Web Ref BD-118501



R405,000

2.5 1.5

Monthly Bond Repayment R4,180.36

Calculated over 20 years at 11% with no deposit.

Transfer Costs R17,928.00 **Bond Costs** R12,935.00

These calculations are only a guide. Please ask your conveyancer for exact calculations.

Monthly Levy R2,980 **Monthly Rates** R240

THIS IS THAT INVESTMENT YOU HAVE BEEN WAITING FOR!!!

Here we have a spacious 89 sqm 2.5 bedroom apartment. This flat is in good condition on the 2nd floor. With a large sitting room that has been partitioned into an extra bedroom, and has an enclosed balcony that is being used as a half room. The lounge area & enclosed balcony was locked but will be made available upon viewing. The main bedroom is very big and has built-in cupboards. The kitchen is neatly fitted. The separate bathroom & toilet makes the flat ideal for being multi-tenanted.

This apartment block has a spacious reception at the entrance. The lifts are in working condition. The security guards are on-site 24hrs. Access into the block is controlled with the use of a tag.

The building is located on Bourke Street within walking distance of basic amenities such as Barclays square, Sunnyside primary school, UNISA,...

Features

Interior

Bedrooms	2.5
Bathrooms	1.5
Recep. Rooms	1

Exterior

Carports / Parkings	1
Security	Yes
Pool	No

Sizes

Floor Size	89m ²
------------	------------------