



Shewaan Abarder
0760925545
imaginesales02@gmail.com

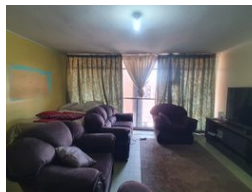
Contact Head Office (JHB,
Pretoria, Cape Town and Garden
Route)

+27 712982714

Unit 6 & 8 Rotherfield Trust
23 Rotherfield Road
Plumstead
7800



Web Ref AF-107678



R390,000

2 1

Monthly Bond Repayment R4,025.53
Calculated over 20 years at 11% with no deposit.

Transfer Costs R16,806.00 **Bond Costs** R11,960.00

These calculations are only a guide. Please ask your conveyancer for exact calculations.

Monthly Levy R1,775 **Monthly Rates** R106

VERSATILE FAMILY GEM!!! AFFORDABLE FIRST HOME!!!

Here we have a spacious 65 sqm 2 bedroom apartment. This flat is in good condition on the 4th floor. With a large sitting room ideal for relaxing after a long day's work. The main bedroom is huge and has built-in cupboards. The open-plan kitchen is neatly fitted.

This apartment block has a spacious reception at the entrance. The lifts are in working condition. The security guards are on-site 24hrs. Access into the block is controlled with the use of a tag.

The building is located in the busy area of Sunnyside on the corner of Kotze and Cilliers Street. with a walking distance of basic amenities such as SPAR Barclays Square, Sunny Park Shopping Centre, UNISA Sunnyside Campus, Netcare Jakaranda Hospital, Sunnyside Primary School, Sasol Garage Sunnyside, and good access to transport.

Estimated Monthly Rental – R 5 500...

Features

Interior

| | |
|--------------|---|
| Bedrooms | 2 |
| Bathrooms | 1 |
| Recep. Rooms | 1 |

Exterior

| | |
|---------------------|-----|
| Carports / Parkings | 1 |
| Security | Yes |
| Pool | No |

Sizes

| | |
|------------|------------------|
| Floor Size | 65m ² |
|------------|------------------|