

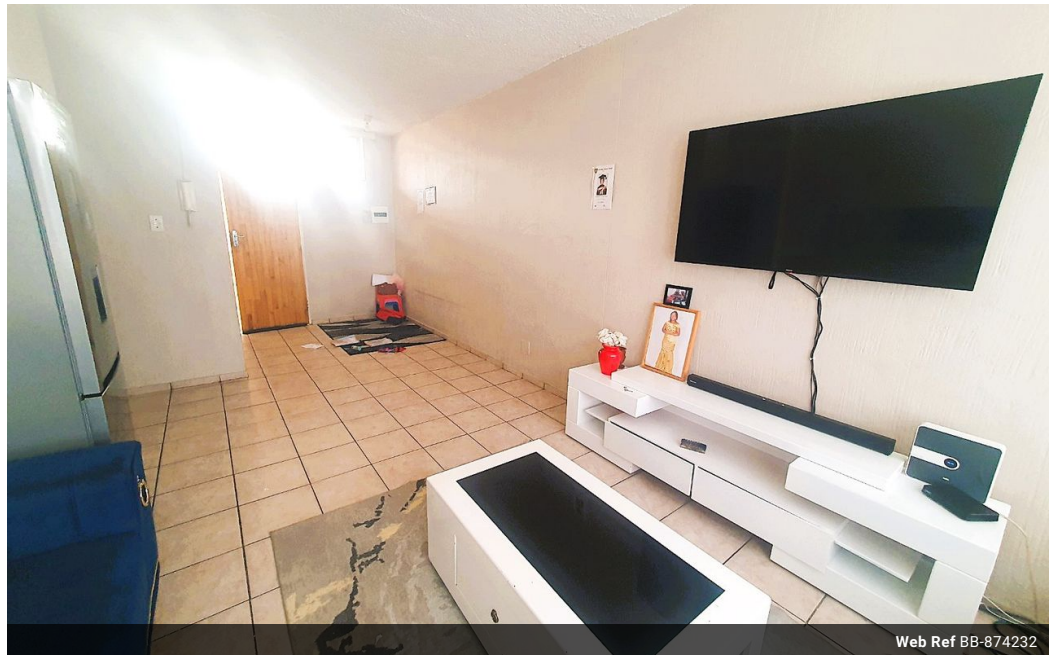


Shewaan Abarder
0760925545
imaginesales02@gmail.com

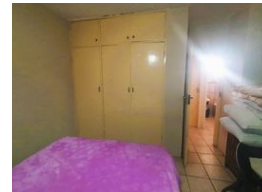
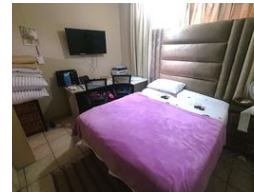
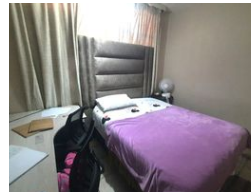
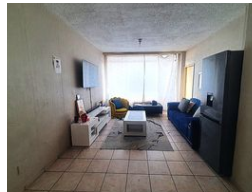
Contact Head Office (JHB, Pretoria, Cape Town and Garden Route)

+27 712982714


Unit 6 & 8 Rotherfield Trust
23 Rotherfield Road
Plumstead
7800



Web Ref BB-874232



R385,000

 1.5  1

Monthly Bond Repayment R3,973.93
Calculated over 20 years at 11% with no deposit.

Transfer Costs R16,806.00 **Bond Costs** R11,960.00

These calculations are only a guide. Please ask your conveyancer for exact calculations.

Monthly Levy R1,574 **Monthly Rates** R133

SPACIOUS ENTERTAINER READY TO MOVE IN TODAY!!!

Spacious entertainer 60sqm 1.5 bedroom apartment. This flat is in fair condition on the 6th floor. With a large sitting room ideal for entertaining. The main bedroom is spacious and has built-in cupboards. The unit has an enclosed balcony that is being used as a half room. The kitchen is neatly fitted. The exclusive-use parking bay is ideal for all your parking needs.

This apartment block has a spacious reception at the entrance. The lifts are in working condition. The security guards are on-site 24hrs. Access into the block is controlled with the use of a tag.

The building is located on Troy Street, within walking distance of basic amenities such as Barclays square, Sunnyside primary school, UNISA, and Sasol garage, and with good access to transport.

Estimated Monthly Rental – R 5 000 – R 7 000 per month.

Estimated...

Features

Interior		Exterior		Sizes	
Bedrooms	1.5	Carports / Parkings	1	Floor Size	60m ²
Bathrooms	1	Security	Yes		
Recep. Rooms	1	Pool	No		