



Shewaan Abarder
0760925545
imaginesales02@gmail.com

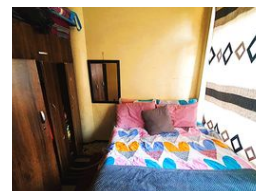
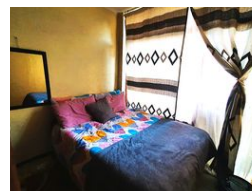
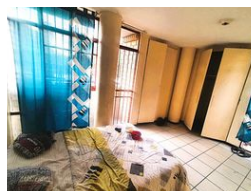
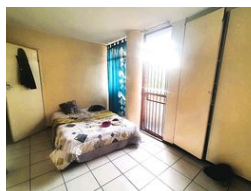
Contact Head Office (JHB, Pretoria, Cape Town and Garden Route)

+27 712982714

Unit 6 & 8 Rotherfield Trust
23 Rotherfield Road
Plumstead
7800



Web Ref BB-1369818



R395,000

 2  1

Monthly Bond Repayment R4,077.14
Calculated over 20 years at 11% with no deposit.

Transfer Costs R16,806.00 **Bond Costs** R11,960.00
These calculations are only a guide. Please ask your conveyancer for exact calculations.

Monthly Levy R1,775

FIRST FLOOR WONDER WHICH IS A TWO BEDROOM INCLUDING ANOTHER TWO PARTITIONED BEDROOMS!!!

First floor which is a spacious 71 sqm which is a 2 bedroom apartment with an additional 2 bedrooms which was partitioned in the lounge area for additional income. This flat is in fair condition on the 1st floor. The large sitting room has been partitioned into 2 extra bedrooms which is a bonus for extra rental income. The main bedroom is spacious and has built-in cupboards. 2 of the bedrooms which is partitioned were locked but will be made available upon viewing. The kitchen is neatly fitted.

This apartment block has a spacious reception at the entrance. The lifts are in working condition. The security guards are on-site 24hrs. Access into the block is controlled with the use of a tag.

The building is located in the busy area of Sunnyside on the corner of Kotze and Cilliers Street. with a walking distance of basic...

Features

Interior		Exterior		Sizes	
Bedrooms	2	Carports / Parkings	1	Floor Size	71m ²
Bathrooms	1	Security	Yes		
Recep. Rooms	1	Pool	No		