



Shewaan Abarder
0760925545
imaginesales02@gmail.com



Crystal Cupido
0000000000

imaginesales02@gmail.com

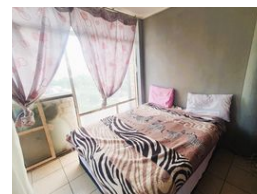
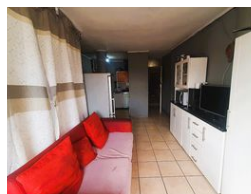
Contact Head Office (JHB, Pretoria, Cape Town and Garden Route)

+27 712982714

Unit 6 & 8 Rotherfield Trust
23 Rotherfield Road
Plumstead
7800



Web Ref AF-107691



R360,000

 2  1

Monthly Bond Repayment R3,715.88
Calculated over 20 years at 11% with no deposit.

Transfer Costs R16,806.00 **Bond Costs** R11,960.00

These calculations are only a guide. Please ask your conveyancer for exact calculations.

Monthly Levy R1,775 **Monthly Rates** R97

TWO BEDROOMS WITH AN ADDITIONAL PARTITIONED BEDROOM FOR EXTRA RENTAL INCOME!!!

65 sqm 2 bedroom apartment where the lounge has been partitioned into an additional bedroom for extra rental income. This flat is in fair condition on the 7th floor.

This apartment block has a spacious reception at the entrance. The lifts are in working condition. The security guards are on-site 24hrs. Access into the block is controlled with the use of a tag.

The building is located in the busy area of Sunnyside on the corner of Kotze and Cilliers Street. with a walking distance of basic amenities such as SPAR Barclays Square, Sunny Park Shopping Centre, UNISA Sunnyside Campus, Netcare Jakaranda Hospital, Sunnyside Primary School, Sasol Garage Sunnyside, and good access to transport.

Estimated Monthly Rental – R 6 200 – R 7 500 per month.

Estimated Monthly Levy – R 1 775.78 per month.

Features

Interior		Exterior		Sizes	
Bedrooms	2	Carports / Parkings	1	Floor Size	66m ²
Bathrooms	1	Security	Yes		
Recep. Rooms	1	Pool	No		